

SHERAKHAN



DESCRIPTION

Builder: Vuyk en Zonen
Built/Refit: 1965/2014/2017
Length: (m/ft) 69.65 / 228'06"
Beam: 12 / 39'04"
Draft: 4.5 / 14'09"

Accommodation:
Cabins: 13
Guests: 26
Crew: 19

Hull material: Steel
Engines: 1 X 1380 HP Caterpillar 3512 B TI-TA
Range: 7000 n.miles

Price: EUR 28,000,000
Location: Med

Not available for Sale to U.S residents while in U.S. waters.

All speeds, measurements, capacities, consumptions, etc. may be approximate or estimated. Specifications provided for information only. Data was obtained from sources believed to be reliable and is not guaranteed by owner or brokers. Buyer assumes the responsibility to ascertain the correctness of all data contained herein and otherwise provided and must instruct his agent and surveyors to confirm all details for accuracy prior to purchase. Subject to prior sale, price and inventory change, or withdrawal from market without notice

SHERAKHAN

Built in 1965, SHERAKHAN acted as a trading ship for the Dutch Maritime Institute before a complete rebuild in 2005 transforming her into a Superyacht. A first refit in 2014 and a second, extensive refit in the last quarter of 2017 made her into the high-end, luxurious beauty she is nowadays.

This hugely successful charter-yacht, well-known in the charter-industry for her great crew, stylish interior design and versatile deck spaces, comfortably accommodates up to 26 guests in 13 staterooms.

Proven global explorer; as comfortable cruising South America and Antarctica as she is in the Caribbean!

GENERAL

| | |
|-----------------------|--------------------------------------|
| TYPE | Passenger Yacht |
| CLASSIFICATION | Bureau Veritas |
| FLAG | Dutch |
| OFFICIAL REGISTRATION | 10227 Z A 2002 |
| IMO NUMBER | 6618823 |
| MMSI NUMBER | 246 370 000 |
| CALL SIGN | PHDD |
| LENGTH O.A. | 69.65m |
| LENGTH W.L. | 62.97m |
| BEAM | 12m |
| DRAFT | 4.5m |
| GROSS TONNAGE | 1945 (rebuilt 2005) |
| NET TONNAGE | 583 |
| DISPLACEMENT | 2,083 short ton (1,890 ton) |
| YEAR BUILT | 1965 |
| REFIT | 2005 / 2014 / 2017 |
| BUILDER | Vuyk en Zonen, Holland |
| EXTERIOR DESIGNER | KMC & KHMB Enkhuizen |
| INTERIOR DESIGNER | Jan Verkerk |
| CONSTRUCTION | Steel Hull, Aluminium Superstructure |
| ACCOMMODATION | 26 guests in 13 staterooms |

SHERAKHAN

MACHINERY

| | |
|-----------------|--|
| MAIN ENGINES | 1 x 3512 B TI-TA 1,380 HP Caterpillar Top-end overhauled in November 2016 Major overhaul at 18.100 running hours in August 2007 |
| SPEED | 13 knots max / 11 knots cruise |
| RANGE | 3500nm at 11 knots, consuming 400 litres per hour 4500nm at 9 / 10 knots, consuming 256 litres per hour 9000nm at 8 / 9 knots, consuming 115 litres per hour |
| GEAR BOXES | REINTJES type WAF 762 with 7.09:1 reduction for 226rpm running |
| PROPELLER SHAFT | SCHAFFRAN. 8.35"/21.2cm diameter oil-bath conventional type propeller shaft with automatic shaft greasing system |
| ENGINE HOURS | Main 30607 (25 March 2019) |

TANK CAPACITIES

| | |
|------------------|-----------------------------|
| FUEL | 128,000 litres / 33,818 gal |
| WATER | 177,000 litres / 46,763 gal |
| HOT WATER | 2,000 liters |
| NEW LUBE OIL | 2.49 m ³ |
| WASTE OIL | 0.99 m ³ |
| HYDRAULIC OIL | 100 liters |
| SLUDGE TANK | 5.05 m ³ |
| OILY BILGE WATER | 4 m ³ |
| GREY WATER | 50 m ³ |
| BLACK WATER | 10 m ³ |

ELECTRICAL SYSTEMS

| | |
|-----------------|--|
| GENERATORS | 2 x 317Kw John Deere 6135 SFM85, Tier 3 with Stamford generators type HCM 534E producing 363Kva, 230v/400v AC, 50Hz new system installed in 2015 1 x 110Kw SISU type 620 DSRMG motor with Stamford generator type UCM 274 F producing 128Kva, 230v/400v AC, 50Hz 1 x 93.5Kw KROMHOUT 6TS 117 motor with EMF DORT Generator |
| GENERATOR HOURS | No.1 19143 (25 March 2019) No.2 17572 (25 March 2019) No. 3 (Sisu) 7787 (25 March 2019) Emergency 129 (25 March 2019) |
| ELECTRICITY | 230v/400v AC, 50Hz with 24v DC |

SHERAKHAN

| | |
|-------------|---|
| BATTERIES | 24v DC battery supply for hotel services, emergency lighting, emergency radio back up etc |
| SHORE POWER | 400v AC, 3-phase, 63 Amp. 2 fused shore connections |

ANCILLARY EQUIPMENT

| | |
|---------------------------|--|
| STEERING | Electric / Hydraulic system with wheel and push button tiller System Emergency tiller and Stork JAFFA 2 rams |
| RUDDER ANGLE INDICATOR | FURUNO type DR-76 |
| BOW THRUSTER | 147Hp (110Kw) VAN WIJK with 35.5" / 90cm diameter |
| STERN THRUSTER | 147Hp (110Kw) VAN WIJK with 35.5" / 90cm diameter |
| STABILISERS | Koop Nautic SEAROC type 4080 |
| FUEL SEPARATOR | Separ filters type 2000/05 MU (heating), type 2000/10 and filters MU (generators) and type 2000/40 (main engines) |
| OIL / WATER SEPARATOR | Rwo Skit S with 1,000 litres per hour capacity |
| FUEL & OIL TRANSFER PUMPS | 2 x Piusi spa (750 W) |
| FIRE / ANCHOR WASH PUMP | Fresh water system |
| FIRE / BILGE PUMP | 3 x Houttuin type 651.080/1 with 40,000 litres (10,670US gallons) per hour capacity each |
| SEWAGE TREATMENT SYSTEMS | Hamman wassertechnik GmbH s/n 6314 MED 0801-02 Capacity 96 m ³ / day Holding tank 10 m ³ |
| WASTE PUMP | Hamman |
| WC'S | Free fall type |
| AIR-CONDITIONING | 2 x Carrier, model 30Hz-091-A0025-PEE |
| WATER MAKERS | 2 x Blue wave type NRO-10.000+sf Capacity 20 m ³ / 24hrs at 25 degrees C seawater temp |
| COMPRESSED AIR | Atlas Copco GX2FF, working pressure 10 bar Hydrovane type 66CM Heemaf type UK112 MDG-4 |

COMMUNICATION EQUIPMENT

| | |
|----------------------|--|
| SATCOM | NERA Fleet 77 satellite |
| INTERNET | Intellian VSAT |
| VHF RADIO TELEPHONES | 2x Sailor 6222, installed 2018 2x Sailor 6207, installed 2018 Extra VHF antenna installed 2018 |
| Navtex | Sailor 6390 with 3-band heavy duty active rod antenna, installed 2018 |
| LRIT | SatC Sailor 6110 GMDSS incl Sailor H1252b/tt-3608a, installed 2018 |
| SSAS | SatC Sailor 6110 GMDSS incl Sailor H1252b/tt-3608a and Sailor 6103 GMDSS Alarm Panel, installed 2018 |

SHERAKHAN

| | |
|-------------------------|---|
| UHF RADIO TELEPHONES | 3 x radios GMDSS type TRON TR20 portable |
| TELEPHONE EXCHANGE | 24 x Icom portable VHF radios 1 x TRON air-band portable |
| INTERCOM SYSTEM | PANASONIC type KXTD 1232 PABX system with 32 analogue extensions and 32 digital extensions |
| SATELLITE COMMUNICATION | RETEC talk-back/P.A. system conforms to SOLAS Area A3 compliant FURUNO distress message controller DMC-5 Intellian VSAT |

NAVIGATION EQUIPMENT

| | |
|------------------|---|
| AIS | Furuno FA-100 |
| MAGNETIC COMPASS | 1 x OBSERVATOR Pilot II 1 x CASSEN & PLATH |
| RADARS | FURUNO sea radar, type FR-2115, FURUNO sea radar, type FR-7062 |
| GPS | 1 x FURUNO type GP32 1 x SIMRAD type GN33 1 x FURUNO type GP-90 Navigator |
| CHART PLOTTER | SIMRAD Plecdis type CS-68 Wheelmark approved (dual outfitted) |
| NAVTEX | ICS type NAV-5 |
| ECHO SOUNDER | FURUNO type FE 700 200KHz FURUNO type FCV-581L Fish finder |
| GYRO COMPASS | SIMRAD type GC80 2x RAYTHEON marine gyro repeaters |
| WIND INSTRUMENTS | ROBINSON |
| WATCH ALARM | Marble type 421 watch alarm system |
| REPEATERS | 6 x SIMRAD type Isis NMEA multi-functional repeaters |
| LOG | FURUNO type DS-80 |
| AUTOMATIC PILOT | SIMRAD/ROBINSON type AP50 |
| VDR SYSTEM | Netwave NW6010 Voyage Data Recorder installed in 2016 |

DECK EQUIPMENT

| | |
|-------------------|---|
| CAPSTANS | 2 x van Wijk 5-tons hydraulic capstans |
| ANCHORS | 2 x 5,072 lbs./2,300Kg in stainless steel anchor pockets and bow |
| CHAINS | 2 x 6.4 shackles/575ft/175m |
| HYDRAULIC CAPSTAN | 1 x vertical hydraulic capstan on aft deck |
| PASSERELLE | Van der Velde type 650NB, hydraulic remote-controlled |
| DAVITS | 2 x Schat Harding davits |
| CRANES | 2 x van Wijk |
| FOREDECK CRANE | 1 x with 5,513 lbs./2,500Kg SWL |
| DECK CRANE | 1 x with 3,640 lbs./1,650Kg SWL Van der Velde type STTR 6000 hydraulic remote-controlled (port side) |
| SWIMMING PLATFORM | Van Wijk hydraulic, remote-controlled |
| SEARCHLIGHT | Imax |

SHERAKHAN

| | |
|-------------------------|---------------------------|
| SUN AWNING | on upper sun deck |
| JACUZZI | on sun deck (22 persons) |
| SAUNA / SPA / GYMNASIUM | (10 persons) type Iberspa |
| BBQ – AREA | on wheelhouse deck |

SAFETY & FIRE PROTECTION

60x lifejackets (SOLAS approved)
2x diesel powered safety tenders on Schat Harding-davits
2x 25-man Viking inflatable life rafts
2x LSE cranes – 2,646lbs./1,200Kg Safe Working Load
5x EEBD's 2x JOTRON type 30S MK2 EPIRB
2x JOTRON Tronsart SART
Full sprinkler system throughout (NSI and BV compliant)
Thorn Security type MINERCA T2000
Fire detection system with 127 sensors
6x fire fighting suits with breathing apparatus, everything conform SOLAS
Fully integrated alarm system made by Praxis
Bilge alarm, machine alarms, tank alarms, etc.
Fire-alarms through whole ship
Intruder/burglary alarm system
CCTV system with 32x cameras and monitors in crew mess, wheelhouse and ship's office
3x office safes and 15x cabin safes

AUDIO / VISUAL ENTERTAINMENT SYSTEMS

All new installed Samsung televisions in guest- and crew-areas
TV on-demand system for guest areas
1 x Designated video distribution system (NAS and Media streamers Cood-E)
SEATEL type 5004 with 7x decoders in ships office and signal distribution throughout vessel
PS3 Sony + several games
PS2 Sony + several games
Wii Nintendo + several games

GALLEY AND LAUNDRY

Dishwasher Beuk ZDS860 with condense hood
Combi steamer
Double electrical deep fryer (9ltrs)
Bain-marie unit
2x Walk-in cold rooms (+4°C)
13x mini-bars type C 330 S

SHERAKHAN

Refrigerator
5x MIELE Professional washing machines
5x MIELE drying machines
Hot air oven
Cold work-bench type BRX502
6x hot plates
Heating lamp
Scullery-bench
2x Walk-in freezer rooms (-18°C)
Freezer

In Crew mess:
Coffee machine type Gallery 200 and LG Refrigerator
2x ironing machines
Cooker hood
Cold work-bench type BRX503

OTHER EQUIPMENT

| | |
|---|---|
| JACUZZI | 1x 22 person on the top deck 1x 8 person in the spa 1x 2 person in the owner's stateroom |
| GYMNASIUM | 1x treadmill (strength step master), 1x step machine (stair master free climber 4600CL), 1x exercise bike (Tunturi E85), 1x cross trainer (Precor EFX 546) plus a selection of weights |
| BARBEQUE on the top deck | |
| SAUNA 1x 10 people in the spa, type Iberspa | |

TENDERS

2x Bernico RX7.6 (black/orange) 320 bHP with Yanmar engine, delivered in 2016
3x YAMAHA type FX1800 waverunner (110kW), delivered 2017

WATER SPORTS EQUIPMENT

2x complete diving sets with compressor
270ft²/25m² floating trampoline
1 paddle board
2 windsurf boards
3 kayaks
3 wakeboards
2 sets water-skis

SHERAKHAN

1 inflatable slide
Several donuts and mattresses

ACCOMMODATION

OWNER

Double stateroom with en suite bathroom, jacuzzi and 1 convertible study with pull down bed

GUESTS

1x VIP stateroom with bathrooms *en suite*
5x Double staterooms with bathroom *en suite*
2x Double staterooms (convertible into twins) with bathroom *en suite*
2x Twin staterooms with bathroom *en suite*
2x Twin children's bunk bed staterooms with shower room *en suite*

CREW

Captain's double cabin with shower room *en suite*
2x Single cabins sharing 2x *en suite* shower room (for chief-officer and chief-engineer)
Chef's cabin; 2 single beds with shower room *en suite*
5x Twin cabins sharing 3x *en suite* shower rooms
1x Four-person cabin with shared bathroom *en suite*

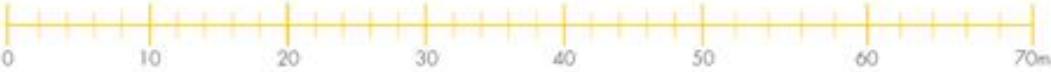
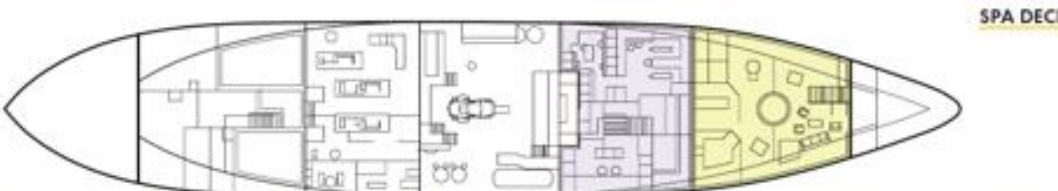
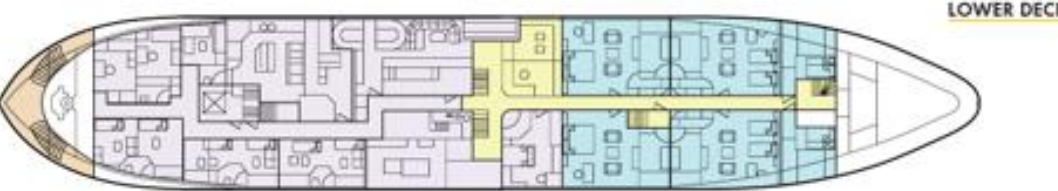
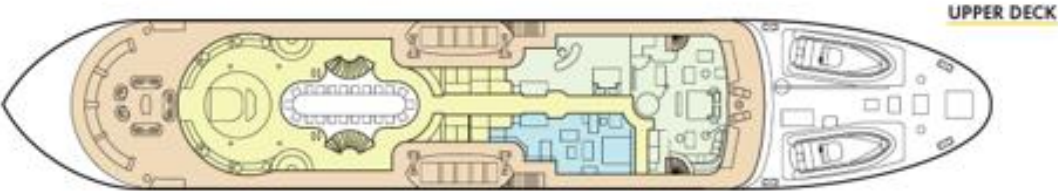
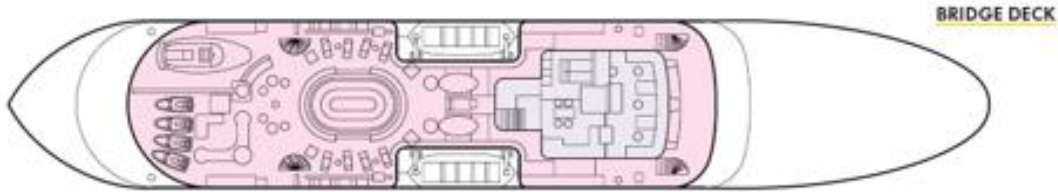
REMARKS

Proven world cruiser
Open main salon of nearly 7 metres height with dining for 26 bathing in natural light
Accommodates 26 guests in 13 staterooms
Master stateroom has a private forward facing terrace
Unique interior layout suitable for large and smaller parties
Quality Dutch engineering fitted in 2005, designed for low maintenance costs
Extremely quiet and comfortable both while sailing and when at anchor
Large top deck designed for entertainment
Extensive space for toys and tenders
Completely separated guests and crew areas including serving spaces such as galley
This yacht was not just refitted but rebuilt from the keel up in 2005

SHERAKHAN

GENERAL ARRANGEMENT

SHERAKHAN GENERAL ARRANGEMENT



KEY

| | |
|---------------|--------------|
| DECK | GUEST CABINS |
| GUEST AREAS | CREW AREAS |
| OWNER'S CABIN | SUN DECK |