

INVADER



Builder:	George Lawley & Son Corp. Shipyard- South Boston- USA
Category:	Auxiliary Schooner
Year Built:	1905
Year Refit:	2003/2019/2020
Refit Type:	Total
LOA	41.60m / 136' 49.00m / 160'7" with bow sprit (<50m no Pilot required)
CONSTRUCTION	Steel Hull
Accommodations:	Guest cabin 3 / 6 guests - Crew 8 in four cabins
Registration:	MALTA (commercial)
Lying:	Genoa (ITALY)
Asking price	€ 4.500.000 Reduced to 3.850.000 Tax not Paid

1. MAIN CHARACTERISTICS

TYPE	Sailing Yacht
HULL NO.	573
OFFICIAL NUMBER	
RIG	Auxiliary Schooner
BUILDER	George Lawley & Son Corp. Shipyard—South Boston
NAVAL ARCHITECT	Albert Stanton Chesebrough
INTERIOR DESIGN	Anna Signorini
YEAR	1905
REFIT	2001—2003 – 2019 - 2020
CLASSIFICATION	RINA Maltese Cross A 100:1
CONSTRUCTION	Steel Hull
CREW	Captain + 7
ENGINES	1 x 700 Hp Caterpillar 3406E DI-TA
GT	187 tons
NT	133 tons
DISPLACEMENT	214.14 tons

2. SPEED & RANGE UNDER POWER

MAXIMUM SPEED	12.5 knots @ 1,800 rpm
CRUISING SPEED	10 knots cruising @ 1,700rpm

3. DIMENSIONS

LOA	41.60m / 136'
	49.00m / 160'7" (<50m no Pilot required)
LOA W/ BOSPRIT & BOOM	59.00m / 193'5"
LWL	29.72m / 97'5"
BEAM	7.88m / 25'8"
DRAFT	4.35m / 14'2"
BOWSPRIT	11.50m / 37'8"
BOWSPRIT FROM HEAD	7.40m / 24'3" (8.6m real)
MAIN BOOM FROM STERN	8.00m / 26'2"
MAIN MAST	30.80m / 101'
MAIN TOP MAST	15.75m / 51'6"
BOTH FROM BASE	42.00m / 137'7"
BOTH FROM DECK	39.50m / 129'5"
FORE MAST	28.35m / 93'

FORE TOP MAST	14.35m /47'
BOTH FROM BASE	38.50m /126'3"
BOTH FROM DECK	36.00m /118'
MAIN BOOM	26.50m /86'9"
FORE BOOM	10.00m /32
MAIN GAFF	14.00m / 45'9"
FORE GAFF	9.60m / 31'4"

4. CAPACITIES

ACCOMMODATION	6 x Guests in 3 cabins
CREW	8 x Crew in 4 cabins including Captain's
FUEL	16,280 litres / 4,300 US gallons in 4 tanks
FRESH WATER	3,600 litres / 951 US gallons in 2 tanks
WASTE WATER	1,900 litres / 501 US gallons in 4 tanks

5. ACCOMMODATION

OWNER

1 x Owner twin bed cabin, double bathroom (washbasin, WC, bidet each; shower in Common), double large wardrobe, sofa, writing desk, stereo,, safe, air conditioned

GUESTS

2 x Guest cabins: each cabin is arranged with: twin beds, bathroom (washbasin, WC, bidet, shower), stereo, air conditioned

SALOON

Dining area for 8 guests, bar, fridge-icemaker, TV, DVD, stereo, air conditioned

CREW

1 x Captain's cabin (2 crew), air conditioned, bathroom (washbasin, WC, Shower) in front of the cabin

3 x Crew cabins each with: upper and lower berth, bathroom

With wash basin, WC, shower, air conditioned

DINETTE

Comfortable dining area for 5-6 Crew in front of galley

6. MECHANICAL EQUIPMENT

ENGINES	1 x 700 Hp Caterpillar 3406E DI-TA
ENGINE HOURS	2,100 October 2020
STEERING SYSTEM	1 x Electro-hydraulic steering gear system Type: CL.2—B401 / 1n-G-X/ 2-3290 / 70°
AUXILIARY STEERING	1 x Hydraulic pump for emergency manoeuvre
ER VENTILATION	Blower 220v 2 speeds; shutter dumper connected to CO2 system
BOARD VENTILATION	Independent air recycling system with 4 x Fancoils Inlet-Outlet System
BOWTHRUSTER	1 x Hydrosystems hydraulic 47 kW type BT 100
STERNTHRUSTER	1 x Hydrosystems hydraulic 35 kW type BT 60S Vickers pumps PVH 98 1 x Oil cooling pump
GENERATORS	2 x 55 kW Kohler model 55 EFOZ Parallel 55 kW generators set
EMERGENCY GENERATOR	1 x 17.5 kW Kohler model 17.5EFOZ
GENERATOR HOURS	TBB 55kW: . 55kW: . 14.5 Kw.
ELECTRICITY	380V 220V 24V
SHORE POWER	Transformer Eurolettro 70VA 380V 220V 50Hz
BATTERIES	
MAIN ENGINE START	4 x Elements Optima top red 1 x Group service batteries 24V 1680Ah Exide type Absolyte 105a33 - 12 Elements (new 2019) 3 x Batteries 12V Optima top red
BATTERY CHARGERS	All Zivan 2 x NG1 input 230V-6A 50-60Hz output 24V-30A 3 x NG3 input 230V-17A 50-60Hz output 24V-80A
INVERTERS	2 x Mastervolt Dakar-Sine 24/5000Power Rating 5000 VA-10000VA/24V DC 1 x Network analyser Revalco 3 x Network analyser circutor 2 x Inverters for A/C compressors Emergency G3 direct 380-III, 220-I power
CONVERTER	1 x Mastervolt DC-AV- 2500W Sine Wave
AIR CONDITIONING	2 x Compressors with Frequency Variator 12 x Fancoils
AIR COMPRESSOR	1 x Compressor 2 Hp 8-10 bar
WATER MAKER	2 x Idromar International model MC5S - 280l/h
FRESH WATER SYSTEM	2 x Autoclaves 1,100W by Sanguineti
WC WATER SYSTEM	2 x Autoclaves 1,100W by Sanguineti
SEWAGE SYSTEM	2 x Tecnicomar - Ecomar 8 Hydrogen Peroxide

BILGE PUMPS	(Marpool Anex.IV Rule 8) Aprox 300litres/h 2xG&R model ACM 502 BT/3 230/400 V Q175 400l/m 1 x Automatic engine room bilge pump
HOT WATER PUMPS	1 x Boiler It 200 with 3 x Coils 3 kW each 1 x Hot water circulation pump 1 x Washing chains pump 1 x Fuel transfer pump

7. SAILS AND RIGGING

SAILS

MAIN SAIL	455.00 m2
	169.00 m2
YANKEE	164.50 m2
FLYING JIB	77.72 m2
FORE TOPMAST STAYSAIL	86.24 m2
QUEEN SAIL	48.00 m2
DELIVERY MAIN SAIL	115.00 m2
MAIN TOP-SAIL	65.70 m2
FORE TOP-SAIL	52,50 m2

BLOCKS	Solimar bronze and wood (ash) Over 130 blocks partially covered with leather
---------------	---

RIGGING	TECI (Italy)
WIRES	Stain steel AISI 316 from 10 to 32 mm Carbon steel, stamp or molten
UNIONS	Melting zinc plus resin (some ones)
TURNBUCKLES	Bronze

WINCHES	6 x Winches 70:1 2 speeds manual (Backstays) 18 x Winches 70:1 2 Speeds electric 1,500W 4 x Winches 80:1 3 Speeds electric 2,000W
----------------	---

8. NAVIGATION EQUIPMENT

GYRO COMPASS	1 x Simrad RGC11 IMO approved
GYROREPEATERS	2 x Simrad AR77 NMEA analog IMO approved
AUTOMATIC PILOT	1 x Simrad Robertson AP20 for hydraulic steering Wind and navigation interfaced
RUDDER INDICATORS	2 x Simrad RI35 Rudder indicator stand-alone self-powered

ECHO SOUNDER	B & G
RADARS	1 x 72mm—15" colour TFT LCD screen Arpa with self-tracking up to 10 targets scanner 4' antenna 12kW 1 x 48nm Simrad CR5— 15" colour TFT LCD screen; Radome 60 CM antenna 5Kw GPS receiver integrated
RADAR PLOTTER EXTERN	1 x External Navico BR-24—10" sunview screen
HEADING SENSOR	1 x Furuno PG-500 integrated (Fluxgate)
TRANSRECEIVER	1 x Koden KAT-100 Class A AIS transreceiver
CHART PLOTTER	1 x Simrad CP52—15'Colour TFT LCD screen turboloader unit memory storage GPS receiver integrated Furuno NX300 with magnetic loop antenna
WIND INSTRUMENTS	1 x Hydra 3000 B&G system with log-eco wind, log, depth 3 x FFE analog repeaters barometric sensor gravity switches High performances racing masthead unit

9. COMMUNICATION & ENTERTAINEMENT EQUIPMENT

SATCOM	1 x DVB terrestrial TV antenna 1 x SATTV antenna Seatel Coastal 24E (2019)
VHF	1 x Simrad RS8400 with DSC8400B control 3 x Handheld VHF Icom IC-M35 IC-M33
SSB	1 x Sailor 4000 program with DSC, antenna 1 x Simrad RS8400
EPIRB	1 x Cospas. sarsat EPIRB ACR Cobham Plus Hydrofix
OFFICE EQUIPMENT	1 x PC Barebon SG41J4

- 5 x CD-tuner music system Sony for cabins, wheelhouse, crew quarters complete with loudspeaker
- 1 x 19" TFT LCD Television Multisystem (PAL-SECAM-NT) with videotape
- Satellite DVB receiver with connection on shore dish
- Surround home theatre Sony
- DAV S-500 installed in saloon

10. DECK EQUIPMENT

ANCHOR WINDLASSES	2 x Vertical windlasses 5,500W
ANCHORS	2 x 175 kg each
ANCHOR CHAINS	2 x Ø 22 mm 125 m each (weight 11.4kg per 1m)
PASSERELLE	4.3m Traditional gangway
BATHING LADDER	Yes
DECK SHOWER	Hot / cold water

AWNINGS Full Awnings throughout
COVERS Covers for all deck furniture and deck house

GALLEY

REFRIGERATION 2 x Compartments with ventilation, differentiable temperature, 220V, automatic power supply 24V/220V
Total Capacity: 470 litres

FREEZER 1 x Freezer with ventilation, automatic defrosting, 24V/220V; total capacity: 415 litres

REFRIGERATOR CABOOSE 2 x Compartments with ventilation, 24V/220V
Total capacity 450 litres

FREEZER CABOOSE 1 x Freezer with ventilation, automatic defrosting, 24V/220V; Total capacity 430 litres

COMPRESSORS Units above equipped with 4 x 24V compressors
1 x U-line combo model 29A, ice production capacity per Day; 10 kg, cube storage capacity 6 kg, refrigerator capacity 60 litres

STOVE Miele model H 389-1 internal volume 60 litres, twin grill

PYROCERAMIC HOB 2 x Hobs -Miele with 6 x Cooking areas

MICROWAVE OVEN Miele model 625 EG, Interior LT 24 S/S
Max Power 1,000W

GRILL Max Power 1,500W w/ 3 x Power levels

DISHWASHER Miele Professional Model G 7774 with 3 x programs

LAUNDRY

2 x Miele Professional model 5427 MC 23
washing load: 6kg , Volume: 57 litres,
Spin-dryer: 1,250 rpm

DRYER 1 x Miele Professional model T 5206
Washing load: 6kg, Volume: 126 litres, with
11 x Drying programs

FIRE FIGHTING

☑ 3 x CO2 bombs 30 litres with 20 kg CO2

Tenders

☑ 1 x 5,50 NOVURANIA Mercury 115 HP
1x3,10 wooden dinghy with full classic rigging

Maintenance

2018-2019 Winter Yard Period

- Hauled & Antifouled
- Bottom audio-gauged
- All new zincs
- gearbox full overhaul
- two masts un-stepped
- rigging full check-out
- full paint job of the masts, booms and gaffs
- full overhaul of the main mast and two spreaders replaced
- Teak side ladder
- New main engine silencer
- full service to ME and GG
- all batteries replaced
- all the interiors “boiserie” totally re-varnished
- crew cabins refreshment
- new galley extraction fan
- Sanding/coating of teak cap rails
- Removal of paint/fairing from underneath cap rails

2019-2020 Yard Period

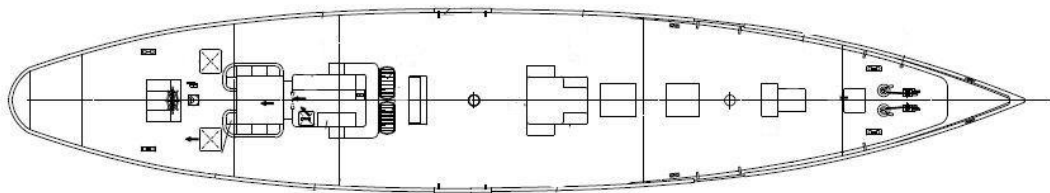
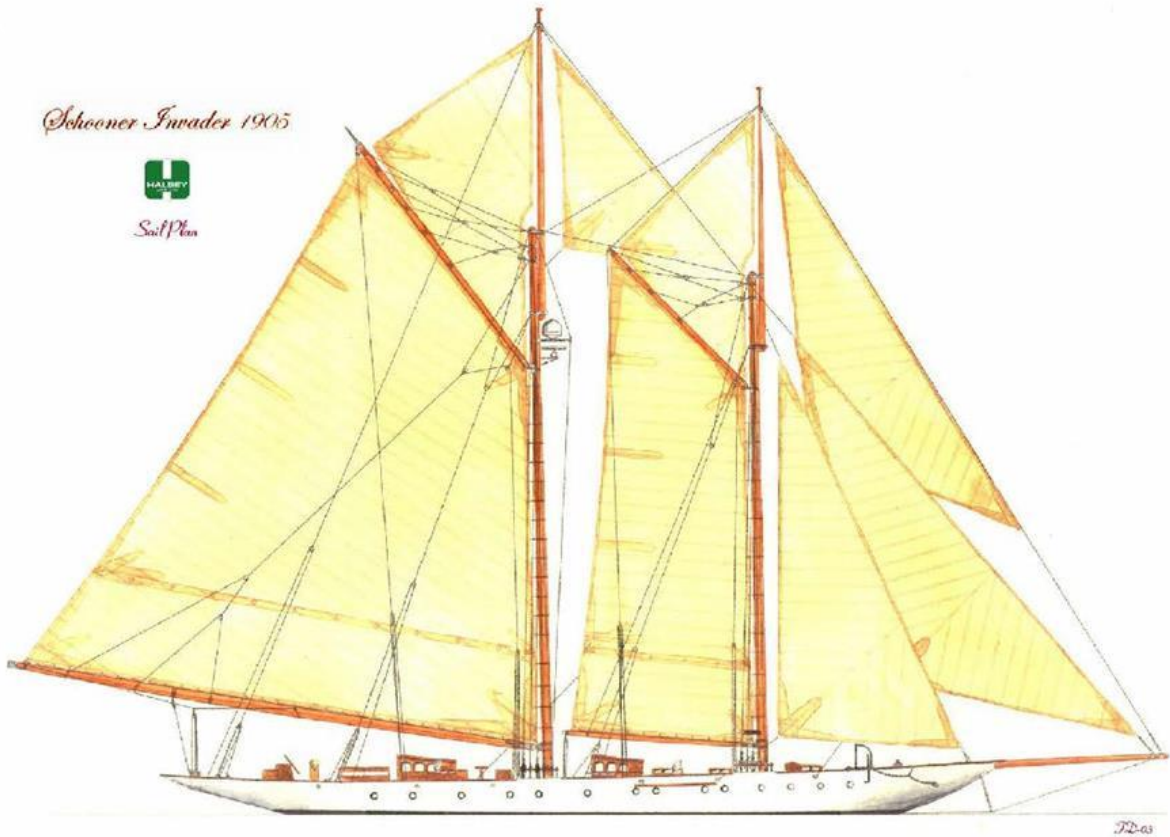
- New center main deck bench covers/foam
- New sun deck awning
- New outdoor dining table and settee with covers and new foldable chairs
- new settee with leather cushions convertible in four extra bunks for regatta’s crew in the two main deck-houses.
- 2 crew cabins painted and fitting an upper bed in the captain’s cabin
- New curtains pilot house office
- New Sat TV antenna
- New TV and entertainment system for guests and crew
- New leather shoes to the masts feet

2020-2021 yard period

- Hauled & Antifouled
- All new zincs
- Fore and two stern deck hatches rebuilt
- Complete paint job of the hull with mat snow white paint
- all the cap-rail removed and re-varnished with 10 coats
- cap-rail bed totally fixed with steel replacement where necessary and repainted
- all the main sails professionally cleaned and checked

S/Y INVADER "The story of the restoration of Invader is as extraordinary as the yacht herself. Designed by the nephew of the great Nathanael Greene Herreshoff, and one of his many disciples, INVADER shows all the signs of the great designs of "The wizard of Bristol". With her nearly 87ft of main boom and 40ft of Bowsprit, her dimensions are extraordinary, as is her performance in light winds. As with all these great yachts, her history is a mixture of triumphs, disasters, film stars, glamour, and neglect. Now, after a period of very little use following the demise of her latest owner, the heirs are very keen to move this masterpiece on, and have consequently priced her at a very sensible level. For an owner who wishes to have one of the great classic yachts of the world, in a very little used condition, and with a great racing and cruising future ahead of her, Invader would be an obvious choice."

Schooner Invader 1905



FLOOR PLAN

