

CROCUS



THE EXPERT'S VIEW

"M/Y CROCUS is the epitome of Admiral's Atos series. Dominating the under 500 GT segment, she arrives on the market virtually untouched and in pristine condition. Her minimalist interior, envisioned by Gian Marco Campanino, is bathed in light, owing to the expansive floor-to-ceiling windows. The yacht's vast exterior spaces are designed for premium leisure and entertainment, while her sizable beach club further solidifies her as a premier choice for those seeking a close connection to the ocean."

48.00 M / 157'06"

SPECIFICATION

| | |
|--------------------|----------------------|
| BUILDER | ADMIRAL |
| BUILT | 2021 |
| BEAM (M/FT) | 8.80 M / 28'10" |
| DRAFT (M/FT) | 2.10 M / 6'11" |
| HULL MATERIAL | ALUMINUM |
| GROSS TONNAGE | 499 |
| ENGINES | 2 X CAT C32 ACERT |
| SPEED | 12 KNOTS / 19 MAX |
| CLASS | RINA |
| FLAG | MALTA |
| EXTERIOR DESIGNER | GIAN MARCO CAMPANINO |
| INTERIOR DESIGNER | GIAN MARCO CAMPANINO |
| GUEST / STATEROOMS | 11 / 5 |
| CREW | 10 / 4 |

CROCUS

MAIN CHARACTERISTICS

| | | |
|------------------------------|---|---------|
| Name: | CROCUS | |
| Type: | Motor Yacht | |
| Builder: | Admiral - The Italian Sea Group | |
| Year: | 2021 | |
| Hull No: | #1 NB589 | |
| Construction Project Name: | ATOS | |
| LOA (M/FT): | 48.00 M | 157'06" |
| LWL (M/FT): | 45.56 M | 149'06" |
| Beam Overall (M/FT): | 8.80 M | 28'10" |
| Draft (Full Load) (M/FT): | 2.10 M | 6'11" |
| Gross Tonnage: | 499 | |
| Displacement (Fully Loaded): | 359,93 T | |
| Displacement (Half Loaded): | 338,72 T | |
| Displacement (Light Ship): | 301,57 T | |
| Net Tonnage: | 149 T | |
| Hull Material: | Aluminum | |
| Hull Configuration: | Light alloy (aluminium 5083) | |
| Superstructure: | Aluminum | |
| Decks: | 3 | |
| Flag: | Malta | |
| Classification: | RINA C Hull Mach Ych, LY3 compliance, Unrestricted Navigation | |
| MCA: | Built as MCA Complaint | |
| Naval Architect: | Admiral | |
| Exterior Designer: | Gian Marco Campanino | |
| Interior Designer: | Gian Marco Campanino | |
| Main Engines: | 2 x Caterpillar C32 ACERT (1,418 kW @ 2,300 RPM) | |
| Speeds: | 19 Knots Max | |
| | 12 Knots Cruising | |
| | 10 Economical | |
| Range: | 3,300nm @ 10 kn | |
| Guest Accommodation: | 11 Guests in 5 Staterooms | |
| Crew Accommodation: | 10 crew in 4 twin cabins | |

CROCUS

CLASSIFICATION

| | |
|-------------------|---|
| Flag: | Malta |
| Port of Registry: | Valletta |
| Classification: | RINA C Hull Mach Ych, LY3 compliance, Unrestricted Navigation |
| EU Tax Status: | Not paid |
| IMO Number: | 9922055 |
| MMSI Number: | 215884000 |

ACCOMMODATIONS

OVERVIEW:

11 guests in 5 staterooms

OWNER'S STATEROOMS:

- 1 x Large Owner's suite on Main deck
- 1 x 2nd Owner's stateroom on Lower deck

GUEST STATEROOMS:

- 1 x VIP stateroom on Lower deck
- 1 x Double stateroom on Lower deck
- 1 x Twin stateroom on Lower deck with pullman

CREW ACCOMODATION:

- 1 x Captain's cabin on Bridge deck (can accommodate extra guests)
- 4 x Crew twin cabins on Lower deck

CONSTRUCTION

| | |
|--------------------------|-------------------|
| Hull Material: | Aluminum |
| Superstructure Material: | Aluminum |
| Decks Material: | Teak |
| Motor Hull Type: | Full-Displacement |
| Motor Hull Sub Type: | Flybridge |
| Number of Decks: | 3 |

CAPACITIES

| | | | |
|--------------------|---------------------|----------------|--|
| Gross Tonnage: | 499 | | |
| Net Tonnage: | 149 T | | |
| Displacement Tons: | 359,93 T | | |
| Fuel Capacity: | 48,000 Litres | 12,680 Gallons | |
| Day Tank: | 10,320 Litres | 2,726 Gallons | |
| Water Makers: | 2 x 300 Litres/hour | 79,25 Gallons | |
| Grey Water: | 6,750 Litres | 1,783 Gallons | |
| Black Water: | 1,570 Litres | 414,7 Gallons | |
| Lube Oil: | 650 Litres | 171,7 Gallons | |

CROCUS

Waste Oil: 710 Litres 187,5 Gallons

| | Speed | Consumption p/h |
|-------------|-------|-----------------|
| Maximum: | 19 kn | 780 litres |
| Cruising: | 12 kn | 190 litres |
| Economical: | 10 kn | 110 litres |

MAIN MACHINERY

Main Engines: 2 x Caterpillar C32 ACERT (1,418 kW @ 2,300 RPM)
 Engine Hours (September 2023): Port:572 hrs
 Starboard:576 hrs
 Propulsion Type: 2 x Shaft line AISI 630
 Gear Boxes: 2 x ZF 2361
 Shafting: 2 x 115 mm
 Propellers: 2 x FPP

GENERATORS & ELECTRICITY

Electricity: 220v/ AC Single-phase 50 cycle/ 380v AC 3 phase 50 cycle 24v DC
 Eekls three- phase converter,400-230 V,50 hertz possible to use in USA
 Generators: 2 x Kohler, models: 125EOZDJ, 100EFOZDJ
 Generator Hours (September 2023): Port:1,529 hrs
 Starboard:1,470 hrs
 Shore Power: Connection through stb aft hatch
 Batteries: Emergency batteries: 24VDC – 1050Ah
 GMDSS Batteries: 24VDC – 280 Ah
 Service Batteries: 24VDC – 420 Ah (Gel ES 2400)
 Main Engine Starting Batteries: 2 x 200 Ah, 24VDC (AGM EM1100)
 Main Engine Electronic Batteries: 2 x 24V 80 Ah (Gel ES900)
 Generators Starting Batteries: 2x 24V 100 Ah (AGM EM1000)
 Motor Pump Starting Batteries: 24V 50 Ah (AGM EM1000)

AUXILIARY MACHINERY

Steering System: Opem steering system with control & indication system in wheelhouse, and emergency steering inside entrance of engine room portside
 Bow Thruster: 1 x CMC 400V 95 kW – Model: Dualis Electra BTM85EA/85
 Stabilisers: Zero Speed CMC – Model LR150 – 11kW

Fuel & Oil System

Fuel Separator: 1 x GEA Westfalia, Model: OSD 2-02-137

Firefighting & Bilge System

Firefighting & Bilge Pump: 2 x Gianneschi ACB 531A&531C

Fresh Water System

Boilers: 2 x Gianneschi 200 litres

CROCUS

Black & Grey Water System

Sewage Treatment: Selmar Blue Sea 7000 Plus

AC & Ventilation System

Air Conditioning: 3 x Dometic – chiller units – 400V – 3f – 50Hz – 16kW

NAVIGATION & COMMUNICATION SYSTEMS

NAVIGATION SYSTEMS

Chart Plotter: 1 x Furuno MFDBB
 Magnetic Compass: 1 x Sperry Marine 2843
 Gyrocompass: 1 x Simrad GC80/85
 Auto Pilot: 1 x Simrad AP70-MK2
 Rudder: Opem Sistemi
 Echo Sounder: FE 800 Furuno
 GPS: 1 x Furuno GP 33
 Navtex: 1 x NX-700 B
 FLIR: M Series

COMMUNICATION SYSTEMS

VHF / DSC: Furuno FM-8900S
 VHF DSC Encoder/Decoder: Furuno FM-8900S
 VHF-DSC Watch Receiver: Furuno FM-8900S
 Navtex Receiver: Furuno NX-700B
 Cospas-SARSAT EPIRB: Ocean Signal Safesea E100G
 SSB MF / HF / DSC: Furuno FS - 1575
 Simplex Transceiver:
 MF - HF / DSC Encoder/Decoder: Furuno FS-1575
 MF - HF - DSC Watch Receiver: Furuno FS-1575
 INMARSAT C + ECG Receiver: Furuno Felcom 18
 GMDSS Handheld VHF Transceiver: Ocean Signal Safesea V100
 Radar Transponder: Ocean Signal Safesea S100 SART
 Automatic Identification System: Furuno FA-170
 Radar: 2 x Furuno FAR 2xx8

DECK MACHINERY & EQUIPMENT

Anchor Windlass System: 2 x Maxwell VC 6000
 Capstans: 2 x 2 Maxwell VWC 8000
 Ground Tackle: 2 x Posidonia anchor with chain (5 shackles of 27.5m the shackle)
 Bow Crane: Sanguinetti
 Passerelle: Besenzoni
 Side Boarding Ladders: 1 x Carbon boarding ladder on portside which can be used for both sides +
 1 connection including wheels
 Searchlight: 1 x 55W

CROCUS

SAFETY, SECURITY, & FIRE FIGHTING EQUIPMENT

| | |
|----------------------------|--|
| Security System: | 1 x Security camera 3 x Monitors, bridge, capt. cabin, crew mess |
| Fixed Firefighting System: | Minimax FM 200 flood engine room Portable fire extinguisher located throughout alarm panel on bridge, in crew mess, and captain's cabin 2 x complete firefighting suits including breathing apparatus Minimax CO2 system for galley |
| Alarms: | All entries into hull and superstructure connected to alarm system |
| Life Rafts: | 4 x Zodiac 12 people life rafts & 1 x Zodiac for 10 people |
| EPIRB: | 1 x ACR |
| SART: | 1 x IESM |
| Searchlights: | 2 x 55W |

ENTERTAINMENT, AUDIO/VISUAL AND IT SYSTEMS

CROCUS is fitted state of the art Satellite TV and entertainment systems including Apple controllers

| | |
|---------------------------------|--|
| Main Salon: | 1 x 144cm Led Tv Samsung 1 x ipad |
| Owner's Stateroom: | 1 x 144cm. Led Tv Samsung |
| Second Owner's Stateroom: | 1 x 125cm. Led Tv Samsung 1 x ipad |
| VIP Stateroom: | 1 x 104cm. Tv Samsung |
| Guest Stateroom Port Side: | 1 x 84cm Tv Samsung |
| Guest Stateroom Starboard Side: | 1 x 84cm Tv Samsung |
| Captain's Cabin: | 1 x 100cm Tv Samsung |
| Crew Mess: | 1 x 80cm Tv Samsung 1 x Sky Italia (international) |
| Crew Cabins: | 3 x 60cm Tv Philips |
| Office Equipment | |
| Computers: | 1 x Lenovo Legion i7 9th Generation, Laptop – for Bridge |
| Wifi: | Wifi network throughout |
| Photocopier / Printer: | HP ColorLaser Jet MFP M282 - 285 – in Bridge Office |

CROCUS

GALLEY & LAUNDRY EQUIPMENT

MAIN GALLEY EQUIPMENT

Refrigeration: 2 x Drink refrigerator

Other: 1 x Icemaker

OTHERS

Refrigeration/Freezer: 3 x Fridge / freezer inside garage
1 x Wine fridge (on Main deck corridor, close to galley)

CREW GALLEY / MESS EQUIPMENT / COOKING EQUIPMENT

Cooking Equipment: 2 x Cooking plates Schott Ceran

Oven: 1 x Miele, model: H7264B

Refrigeration: 1 x G 6660 Scvi

Dishwasher: 1 x G 6660 Scvi

Main Laundry Equipment: 1 x Miele Owner clothes washing machine – model: WCR870 WPS

1 x Miele guest clothes washing machine – model: WCR870 WPS

Dryer: 1 x Miele guest clothes drying machine – model: HT28W

Crew Laundry Equipment: 1 x Miele washing machine – model: WCR870 WPS

1 x Miele drying machine – model: HT28W

OTHER EQUIPMENT

Spa Tub: Piping installation ready for jacuzzi on sun deck

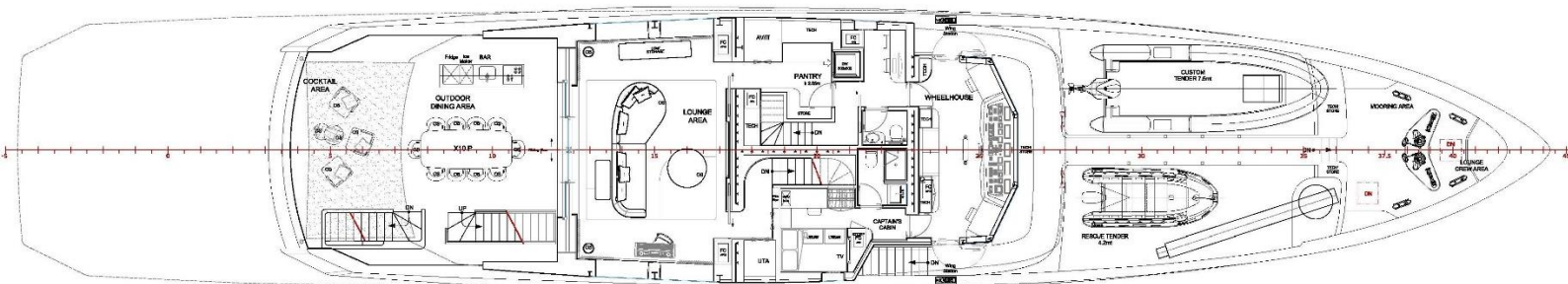
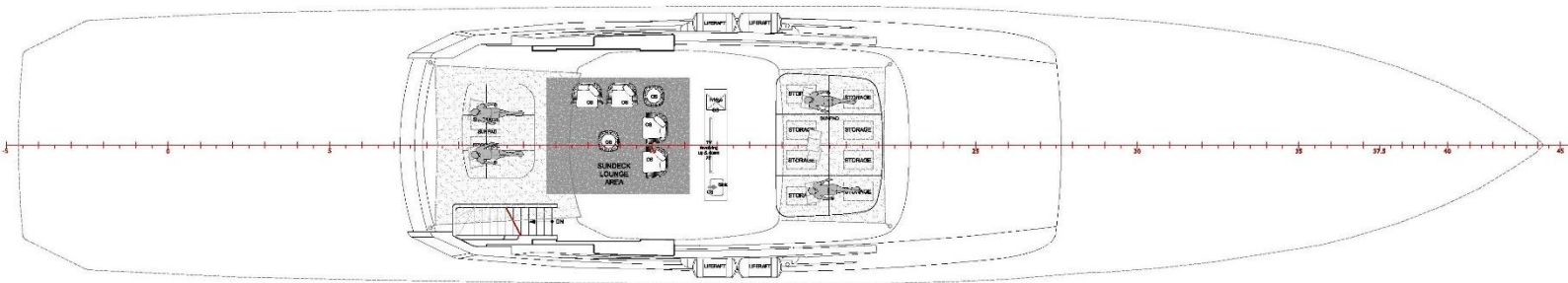
TENDERS & TOYS

Tenders: 1 x Castoldi Jet tender 23, 7.1m length

Rescue Boat: 1 x Sportis S-4900 Rib Boat, 4,90m length with D-Torque engine

CROCUS

GENERAL ARRANGEMENT



CROCUS

