

As you like it

Cammenga 85 Pacific Class



26m Cammenga 1975.
W. De Vries Lentsch design.
4 cabins accommodating 8 guests.

As you like it

DESCRIPTION

Builder: Cammenga

Built: 1975

Length: 26.00
(m)

Beam: (m) 6.12

Draft: (m) 2.53

Hull material: Steel

Engines: 2 x 172 hp Gardner

Range: 2,350 n. miles

Accommodation:

Cabins: 4

Guests: 8

Crew: 4

Price: POA - VAT Paid

Location: Imperia (Italy)



As you like it



As you like it

MAIN CHARACTERISTICS

TYPE:	Displacement Motor Yacht
BUILDER:	Cammenga – Wormerveer Holland
DESIGNER:	Willem De Vries Lentsch
YEAR:	1975
FLAG:	Italian
LOA:	26.00 m
LWL:	22.37 m
BEAM:	6.20 m
DRAFT:	2.53 m
HULL MATERIAL:	Steel
S / STRUCTURE:	Steel
Gross tonnage:	131 tons
Net tonnage:	105 tons
Displacement:	135 ton
ENGINES:	2 x 172 hp (128KW) Gardner type 6L3B (1100 rpm)
GENERATORS:	2 x 25Kw Northern Light @ 10.000hours each
CONSUMPTION:	42 Lt/h both engines including one genset
ACCOMMODATION:	8 guests in 4 staterooms 4 crew in 2 cabins

PERFORMANCE AND CAPACITY

SPEED:	8,5 knots cruising @ 850 rpm 10,00 knots maximum @1000 rpm
RANGE:	2350 n. miles
Fuel:	13.000 liters
Water:	5.000 liters
Grey/Black water:	4.000 liters

Water maker: Sea Recovery (2014) 250 liters/h

As you like it

ACCOMMODATION

MASTER CABIN

The Owner's suite has a feeling of space and comfort given it is located on the main deck amidship. It has a classical style and lined in original briar wood. There is a king size bed with two spacious night stands as well as ample closets. The en-suite bathroom is equipped with shower and direct access to the deck.

VIP CABIN

Very comfortable cabin with queen size bed and classic stylish atmosphere with ensuite.

TWIN GUEST CABIN

Twin bedded cabin with extra Pullman and ensuite facilities.

SINGLE CABIN

Cosy and comfortable single cabin with its shower and toilet.

CREW

Captain's cabin on the Upper deck

One triple crew cabin with en-suite toilet and shower.

MAIN DECK

The aft deck is the perfect place to welcome guests it is spacious with a large round table and wooden chairs with blue cushions, simple and gracious. Entering into the main deck saloon the room offers "L" shaped sofa with two armchairs, a coffee table, a small library, a few storage cupboards, a drinks cabinet and a small fridge. The ambience is light and refined with enough windows and natural light to allow guests to enjoy the outside from the comfort of the saloon. The saloon then leads through a door into the corridor and main stairs leading to the lower/upper decks.

Moving forward down the starboard passageway there is the Owner's cabin and then on the left there is the staircase going down to the crew quarter, galley and Engine room. Back on the corridor on the main deck, moving forward there is the door giving access to the separate dining area.

The full width Owner's suite has a King size bed and an en-suite bathroom with a Jacuzzi style bath.

On the main decks, port and starboard, there are ladders to allow guests to climb on board from the sea while at anchor or to provide access to the sea for swimming.

As you like it

LOWER DECK

From the staircase on the Main Deck You will reach the Lower deck Aft with the guest's cabins.

The other staircase on the main deck fwd will leading You to the galley, Crew quarter and Engines room.

The galley is well equipped containing a large bench/ preparative areas, a microwave oven, electrical hot plates, a large oven and three fridge/freezers.

Adjacent to the galley is the crew dining area with a table and couches.

From the galley moving afterwards, through a watertight door you will find the Engine room.

UPPER DECK

The outside aft upper deck, which can be accessed by stairs from the main deck interior passageway or by stairs from the fwd main deck, has a very appealing entertainment area which features an outdoor table and chairs which are covered by a canvas for shading.

Moving forwards we will find the wheelhouse where all the nautical equipment can be found.

The wheelhouse can also be accessed on either side from both outdoor decks.

ELECTRONICS AND NAVIGATION EQUIPMENT

GPS Furuno GP 37

NAVTEX ICS

Log B&G Hydra 2000

Wind station B&G

Radar Furuno FR 2010 72mls

Autopilot Robertson AP45

Chart Plotter Furuno Navnet 3D

Positioning Furuno DGPS-GP37

n. 1 Magnetic and n.1 electric Compass

2 SEA TEL –

Horns & whistle KAHLENBERG

Searchlight with handheld control

VHF 1xFuruno FM4721

2xIcom handheld

MF/HF 1xIcom M801E

TV receiver Seatel Cobham (2008) with decoder

SAT-COM Inmarsat C

As you like it

ELECTRICAL SYSTEM

380 V/50Hz
250 V/50 Hz
24 V cc

MECHANICAL AND ENGINE EQUIPMENT

Engines:	2 x GARDNER Mod. 6L3B 6 Cylinders diesel engines Port/stb hours: @ 12.500 (2024) Gearbox: Gardner – red. 3.00/1
Generators:	2 x 25kW - Northern Light (2005) hours: @ 11000 hours each
BATTERIES:	Starter, Service and Emergency
BOW THRUSTER SYSTEM:	Side Power
STABILIZER SYSTEM:	Vosper/Koopnautic

SEA RECOVERY Fresh maker water 250lt/h (2014)
Air compressor
Ventilation/Extraction System
Fuel transfer System
Air Conditioning System
Forced Air System

GALLEY - PANTRY AND LAUNDRY

Galley:	Microwave oven Gaggenau oven Gaggenau Hob combined with char-grill (1993) Dishwasher MIELE 3 custom built Fridges 2 custom built Freezer
	1 fridge 1 ice maker

As you like it

Food warmers
Glass washer ELFRANO

Laundry: washing machine MIELE (2020)
 Dryer MIELE (2020)

DECK AND SAFETY EQUIPEMENT

Anchor windlass : double gear model, STEEN electrical with remote control
2 galvanised anchors 150 Kg each
2 anchor chains (4 length each)
2 capstans on anchors winch and 1 on the stern cockpit aft.
1 tender Crane Sanguineti (max load 600Kg)

1 Lateral ladders
1 Gangway

CO2 SYSTEM in Engine Room
2 LIFE RAFTS for 10 people each SOLAS
2x man overboard buoys
Solas flare pack
Portable fire extinguishers
Smoke & temp detector
GMDSS 2x navico VHF
EPIRB Satfind 406 n.1 hand held
SART / RADAR responder n.1 hand held
4 Lifebuoys with rope

TENDERS AND TOYS

1 NOVURANIA 400DL rigid hull inflatable. 2008 with OB engine Yamaha 50hp Four Stroke

As you like it

BROKER'S COMMENTS

As You like it is a true gentleman's yacht of the very highest calibre. With de Vries Lentsch quality naval architecture and flawless execution by the iconic Cammenga Dutch builder, it is difficult to find a better combination in the creation of this yacht.

As You like it was commissioned by the Rotschild family in 1975. Since then, she has been a truly private yacht, used mainly in the Med, expertly maintained to the very highest standard throughout. Her canoe stern, elegant classic lines with a lovely sheer-line and a sturdy yet gentle look belies her construction and systems.

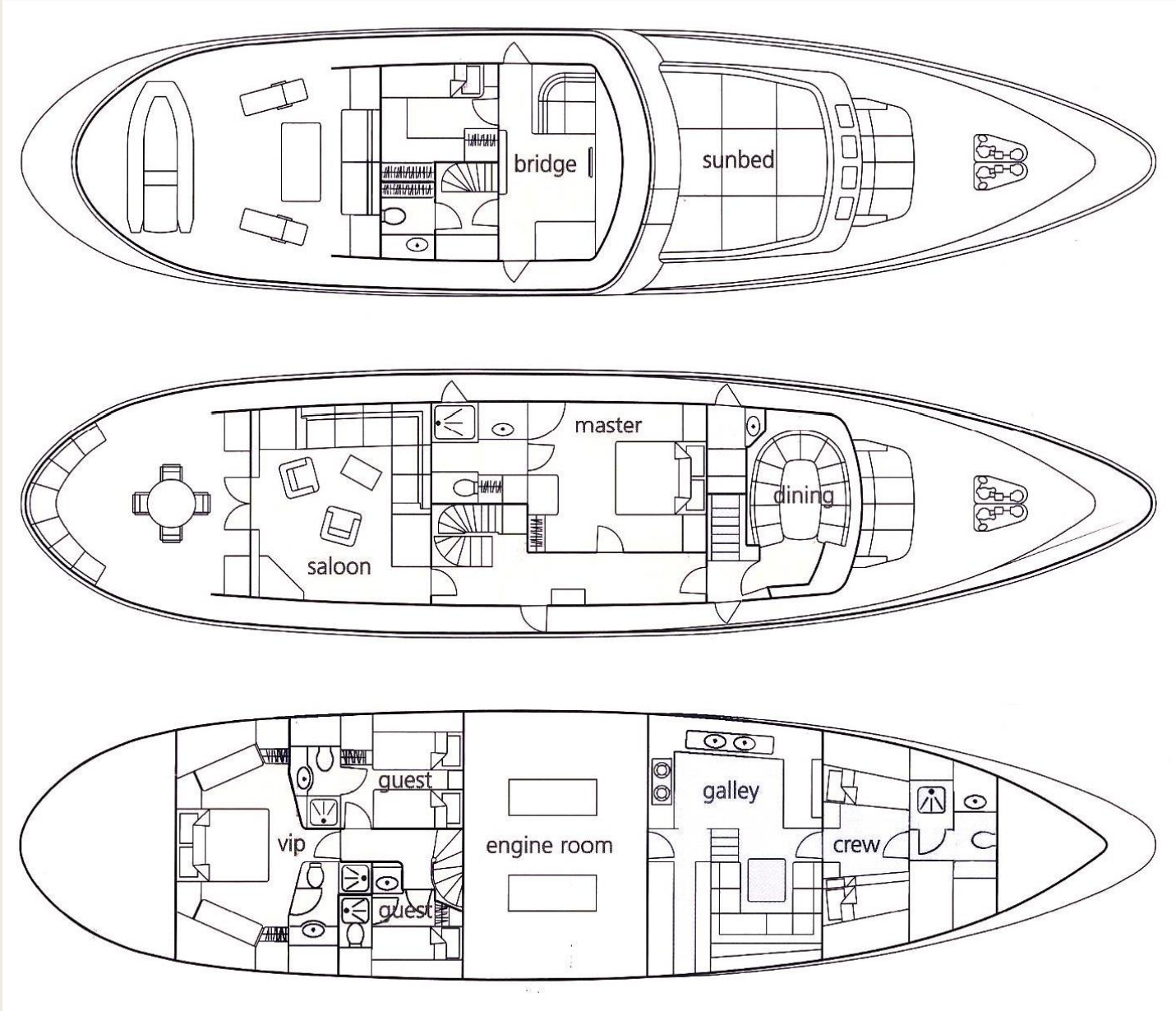
The interior is expertly laid out and detailed and is kept in a classic nautical style with warm briar wood raised panelling, highest quality furniture, textiles and carpeting. The yacht is a witness to timeless understated elegance and an owner's love of the sea.

Accommodation for eight guests including the owner is organised in the traditional way with owner's suite comprising main bedroom and an ensuite on the main deck, whilst the other guest cabins are located on the lower deck.

The main deck saloon is a welcoming space for the owner and his guests while the dining room is perfect for a relaxed or more formal dinner.

In this comfort it is tempting to travel and *As You like it* is blessed with a sea kindly hull shape. Her solid construction can withstand the rougher seas as well as slide effortlessly through smooth coastal waters and inland waterways. Her low fuel consumption, highly relevant today and in the future, is proof of this efficient hull shape. *As You like it* is indeed the real gentleman's yacht always appealing, up to date and ready for a new owner.

As you like it



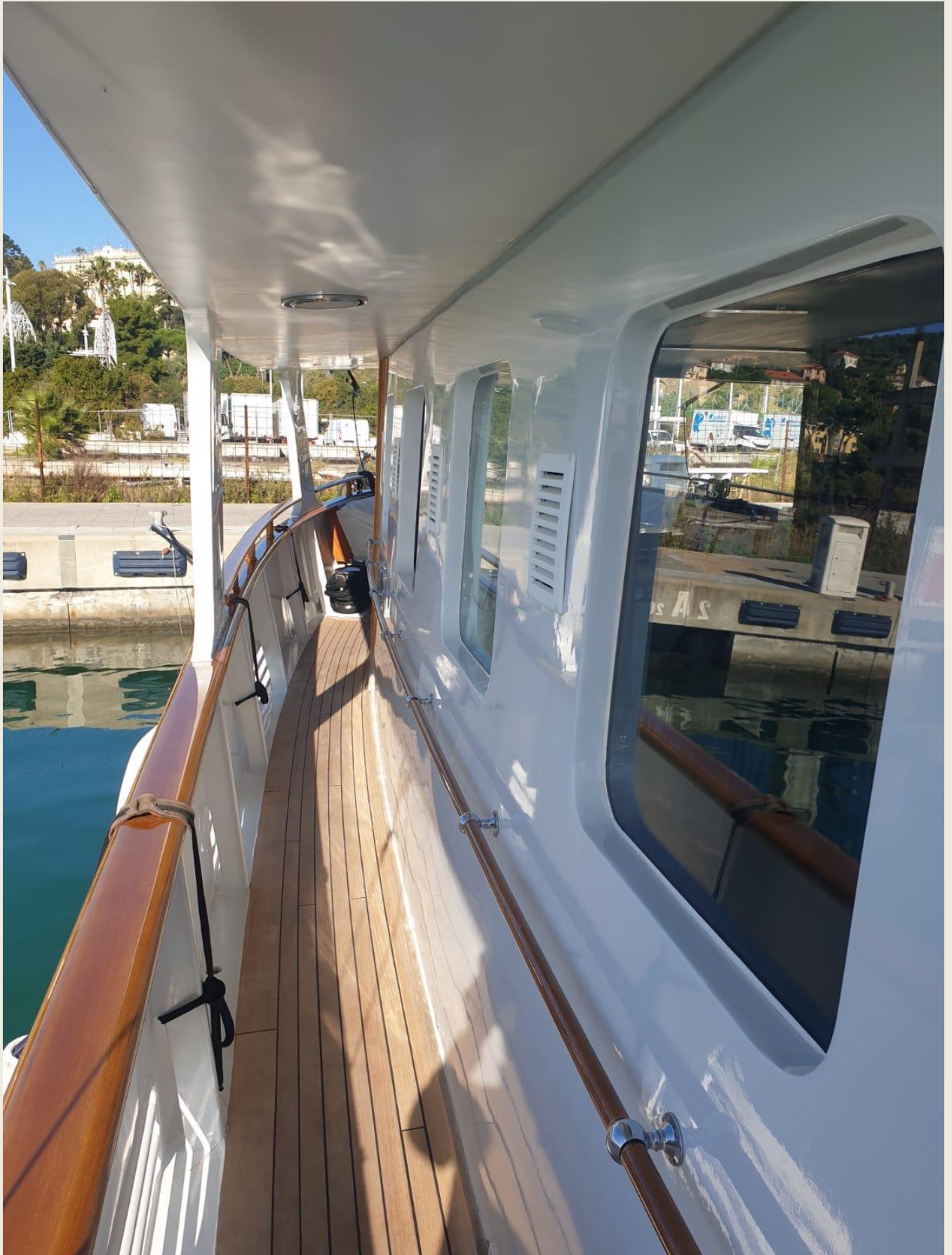
As you like it



As you like it



As you like it



As you like it



As you like it



As you like it



As you like it



As you like it



As you like it



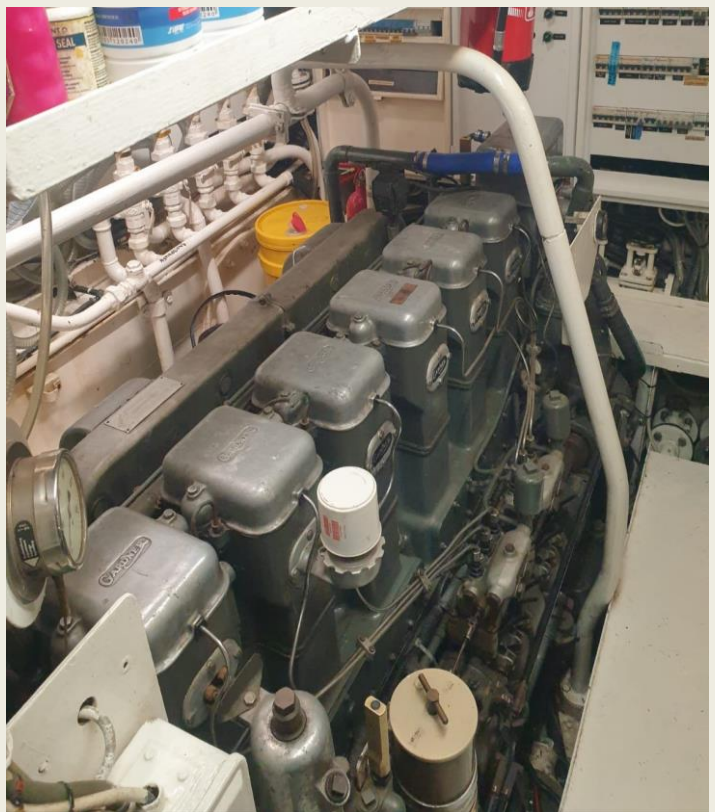
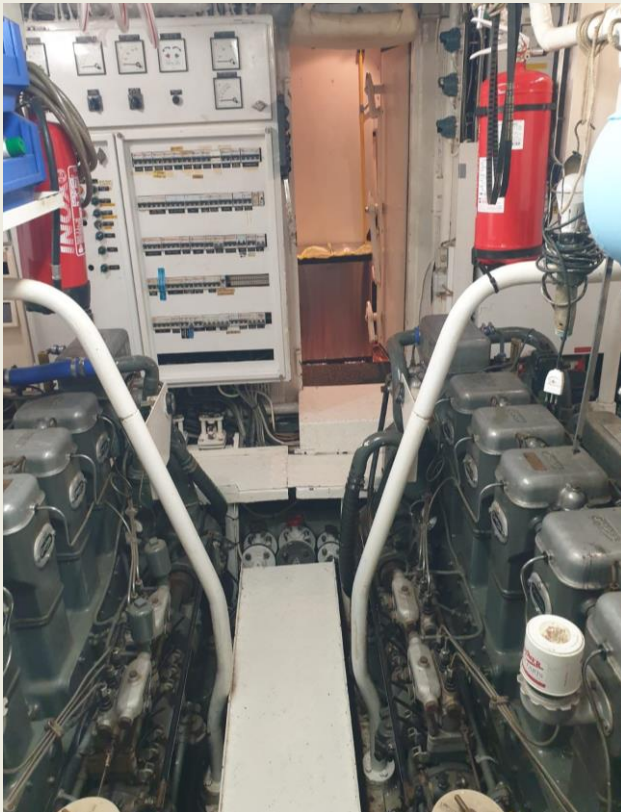
As you like it



As you like it



As you like it



As you like it

